

A welder wearing a protective mask and gloves is working on a metal piece. Sparks and smoke are visible from the welding process. The background is dark and industrial.

THE UNIVERSITY OF NEW MEXICO

STUDENT WELL-BEING ASSESSMENT

**2024-2025 UNM-Los Alamos
Findings Report**

A Lobo Well-Being Project

SUMMARY

The UNM Student Well-Being Assessment was completed in Fall 2024 in partnership with the American College Health Association (ACHA). 4,704 UNM students participated in the survey, which investigated areas of well-being, known as “dimensions”, that are influenced by the college environment. Please refer to the *Student Well-Being Assessment: 2024-2025 Findings Report* for information regarding ACHA’s dimensions and correlation to the University’s Lobo Well-Being framework.

This supplemental report references terminology specific to the American College Health Association’s Well-Being Assessment. Definitions of Trans/GNC, Dimensions, and the use of sex and gender are included in the 2024-2025 Findings Report.

DEMOGRAPHICS

According to the UNM Office of Institutional Analytics (OIA) Official Enrollment Report (OER), the total Los Alamos Campus Headcount for Fall 2024 was 341 students. Of that total, 41 students participated in the Student Well-Being Assessment, resulting in a response rate of 12%. Approximately 49% of Los Alamos’ Fall 2024 headcount was female, while approximately 51% was male. OIA does not currently track transgender or gender non-conforming identities in the OER.

See Figure 1 below for additional demographic information.

Figure 1. Los Alamos Respondent Demographics

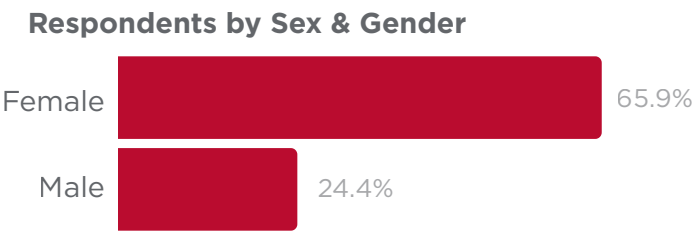


61%
Identify as BIPOC

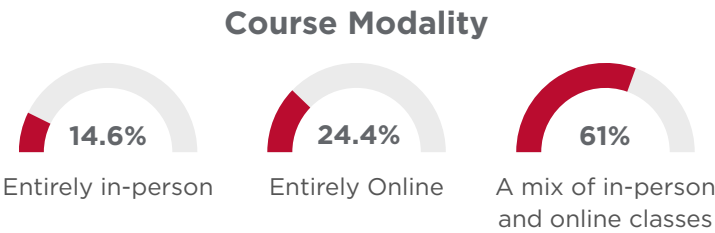
65.9%
Reported being a first generation college student

24.4%
Reported primary responsibility for a child under the age of 18*

31.7%
Identify as Queer



61% reported full-time enrollment
34.1% reported part-time enrollment



*For the purposes of this study, this group is known as Parenting Students

RESULTS & KEY FINDINGS

Figure 2. Dimension Scores by Campus

● = Most desirable score

Dimension Scores by Campus			
	Los Alamos	All Other Branches	Central (Main)
Happiness	33.28	34.35	30.71
Anxiety	30.03	25.57	29.29
Depression	23.90	20.53	22.68
Loneliness	20.45	18.02	19.79
Social Anxiety	23.25	20.78	22.60
Life Satisfaction	38.28	44.05	42.04
Self-Esteem	38.84	45.18	42.44
Optimism	36.79	41.33	37.47
Positive Coping	34.50	35.61	34.49
Belonging	41.41	46.62	41.41
Meaning	39.33	47.24	42.95
Purpose	45.26	50.59	49.24
Academic Engagement	38.24	46.91	43.95
Activity Engagement	37.91	42.15	43.20

Students at the Los Alamos campus reported less desirable scores in all dimensions compared to their peers at All Other Branches. Compared to their Central (Main) Campus peers, students at Los Alamos reported more desirable Happiness scores and generally reported less desirable scores except in the Positive Coping and Belonging dimensions, which were identical or nearly so. See Figure 2.

Notably, more students at Los Alamos reported having Disabilities or Conditions versus those who identified as BIPOC or First Generation—the largest demographics at other campuses. Students with Disabilities or Conditions reported similar or slightly less desirable scores in all dimensions except Belonging and Purpose compared to their peers at Los Alamos. Queer-Spectrum students reported less desirable scores in all but two dimensions (Loneliness and Belonging) compared to their peers at the same Branch.

Unlike with Parenting Students at Central (Main) Campus, Los Alamos does not have a population that scored significantly more desirably than the mean across most or all dimensions.



Mental Health and Access to Care

Figure 3. Los Alamos Students' Mental Health and Access to Care



75.6% of students at Los Alamos report having at least one disability or condition



34.1% of students at Los Alamos cannot currently afford to obtain mental health care if needed.



36.6% of students at Los Alamos cannot currently afford to obtain medical care if needed.

The number of students at Los Alamos who report having at least one disability or condition is significantly higher than the average of students at all campuses (75.6% vs. 57.9%). However, 8.5% more students at Los Alamos cannot currently afford medical care if needed while 2.8% more cannot currently afford mental health care if needed. This indicates that students at Los Alamos may face greater barriers to care than the average UNM student. See Figure 3.

RESULTS & KEY FINDINGS (CONTINUED)

Within the last 30 days, 51.2% of students at Los Alamos indicated the food they bought did not last, and they did not have money to get more (vs. an average of 31.4%). 31.7% of Los Alamos students also reported sometimes/often/very often contributing money to support family members, vs. a UNM-wide average of 26.3%. Students at Los Alamos appear to worry slightly less about paying for their educational expenses compared to the average UNM student (51.3% vs. 56.4%). See Figure 4.

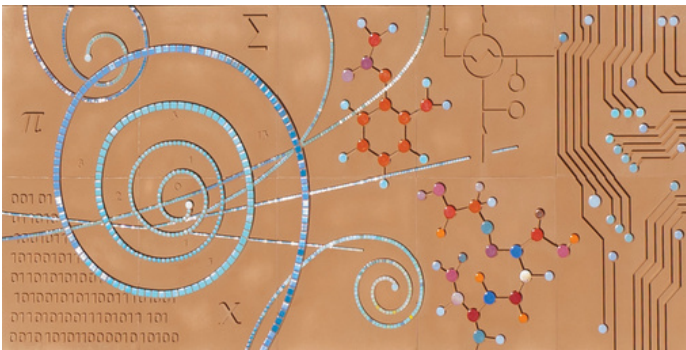


Figure 4. Los Alamos Students' Basic Needs and Financial Concerns

51.2%

Within the last 30 days, the food I bought (sometimes/often) just didn't last, and I didn't have money to get more.

31.7%

I (sometimes/often/very often) contributed money to help support family members who were not my own domestic partner or children.

51.3%

I (sometimes/often/very often) worried about being able to pay for my educational expenses.

CONSIDERATIONS

In addition to the Considerations highlighted in the 2024-2025 Findings Report, please note that, due to the number of responses, care should be taken when

reviewing these data. With a response number of 41, Los Alamos met the desired 10% response rate, but sub-population data may not be fully representative of the Los Alamos student body. Additionally, some sub-populations including Veterans, Trans/GNC students, and parenting students have been excluded from further analysis due to the risk of identification. Lastly, research requirements have mandated that students under the age of 18 be excluded from this assessment. Given the composition of UNM's Branch Campuses in general, it is important to remember that these data apply *only* to students 18 years of age or older.

REFERENCES

American College Health Association. American College Health Association-Well-Being Assessment: University of New Mexico Executive Summary Fall 2024. Silver Spring, MD: American College Health Association; 2024.

The University of New Mexico. (2025). *Student Well-Being Assessment: 2024-2025 Findings Report*.

UNM Office of Institutional Analytics. (n.d.). *University of New Mexico Official Enrollment Report* [Public dashboard]. Retrieved September 3, 2025, from <https://oia.unm.edu/facts-and-figures/official-enrollment-reports.html>

The UNM IRB protocol associated with this study is **#2407139897**

Photo Credits: Hyunju Blemel



**DIVISION OF
STUDENT AFFAIRS**